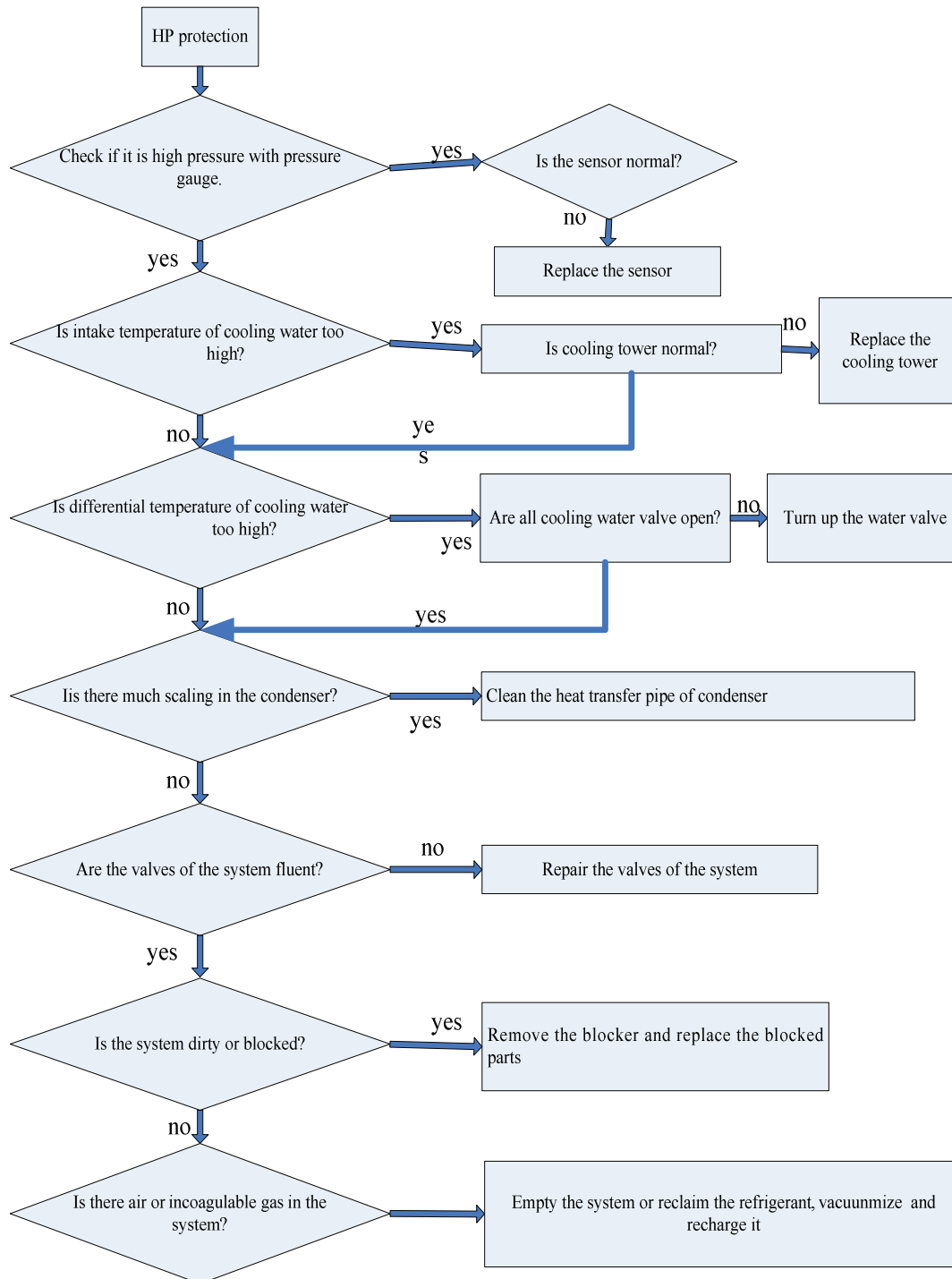


			resetting.
phase sequence of power supply	Phase sequence protection	Lack phase protector	When the phase sequence of the power supply is wrong or the power supply is lack of phase, the lack phase protection will occur and the error LED of system 1 and system 2 will light and all the compressors will stop immediately. The malfunction information is shown on the wired controller. The unit can be started up only after the malfunction is removed manually.
low flow of cooling water	low flow protection of cooling water	heat detector of inflow and outflow temperature for cooling water	When the controller detects for successive 10min that the differential temperature between inflow and outflow cooling water is higher than the setting value, the error LED will light. The wired controller will display the information of insufficient cooling water flow, but the unit will not stop. The error can be removed automatically.
low flow of chilled water	low flow protection of chilled water	heat detector of inflow and outflow temperature for chilled water	When the controller detects for successive 10min that the differential temperature between inflow and outflow chilled water is higher than the setting value, c, but the unit will not stop. The error can be removed automatically.
high pressure sensor	sensor malfunction protection	high pressure sensor	If the sensor is wrong, the error LED of system 1 and system 2 (dual system) will light and all the compressors will stop immediately. The malfunction information is shown on the wired controller. The unit can be started up only after the malfunction is removed manually.
low pressure sensor	sensor malfunction protection	low pressure sensor	If the sensor is wrong, the error LED of system 1 and system 2 (dual system) will light and all the compressors will stop immediately. The malfunction information is shown on the wired controller. The unit can be started up only after the malfunction is removed manually.
discharge temperature sensor	sensor malfunction protection	discharge temperature sensor	If the sensor is wrong, the error LED of system 1 and system 2 (dual system) will light and all the compressors will stop immediately. The malfunction information is shown on the wired controller. The unit can be started up only after the malfunction is removed manually.
inspiratory temperature sensor	sensor malfunction protection	inspiratory temperature sensor	If the sensor is wrong, the error LED of system 1 and system 2 (dual system) will light and all the compressors will stop immediately. The malfunction information is shown on the wired controller. The unit can be started up only after the malfunction is removed manually.
oil switch	oil switch protection	oil switch	When the oil level of the compressor is too low, the oil level switch protection will occur. The corresponding error LED will

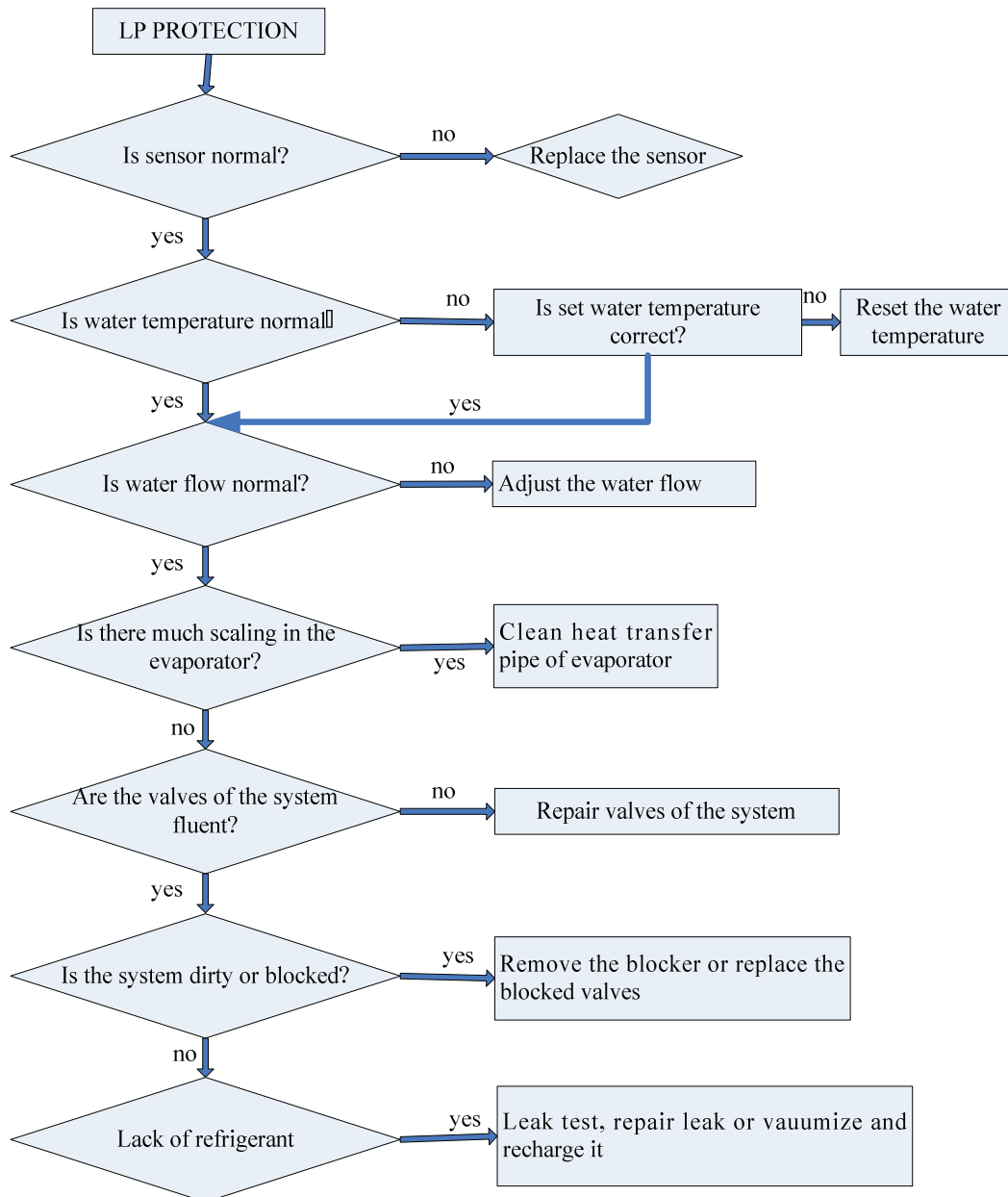
			<p>light and the corresponding compressor will stop. The malfunction information is shown on the wired controller.</p> <p>The unit can be started up only after the malfunction is removed manually.</p>
differential pressure protection	differential pressure protection	high pressure and low pressure sensor	<p>When it is detected that the differential pressure of the compressor is too low, the differential pressure protection will occur and the compressor will stop.</p> <p>The unit can be started up only after the malfunction is removed manually.</p>
heat detector of condenser outlet	sensor malfunction protection	heat detector of condenser outlet	<p>If the sensor is wrong, the error LED of system 1 and system 2 (dual system) will light and all the compressors will stop immediately. The malfunction information is shown on the wired controller.</p> <p>The unit can be started up only after the malfunction is removed manually.</p>

2 FLOW CHART OF TROUBLESHOOTING

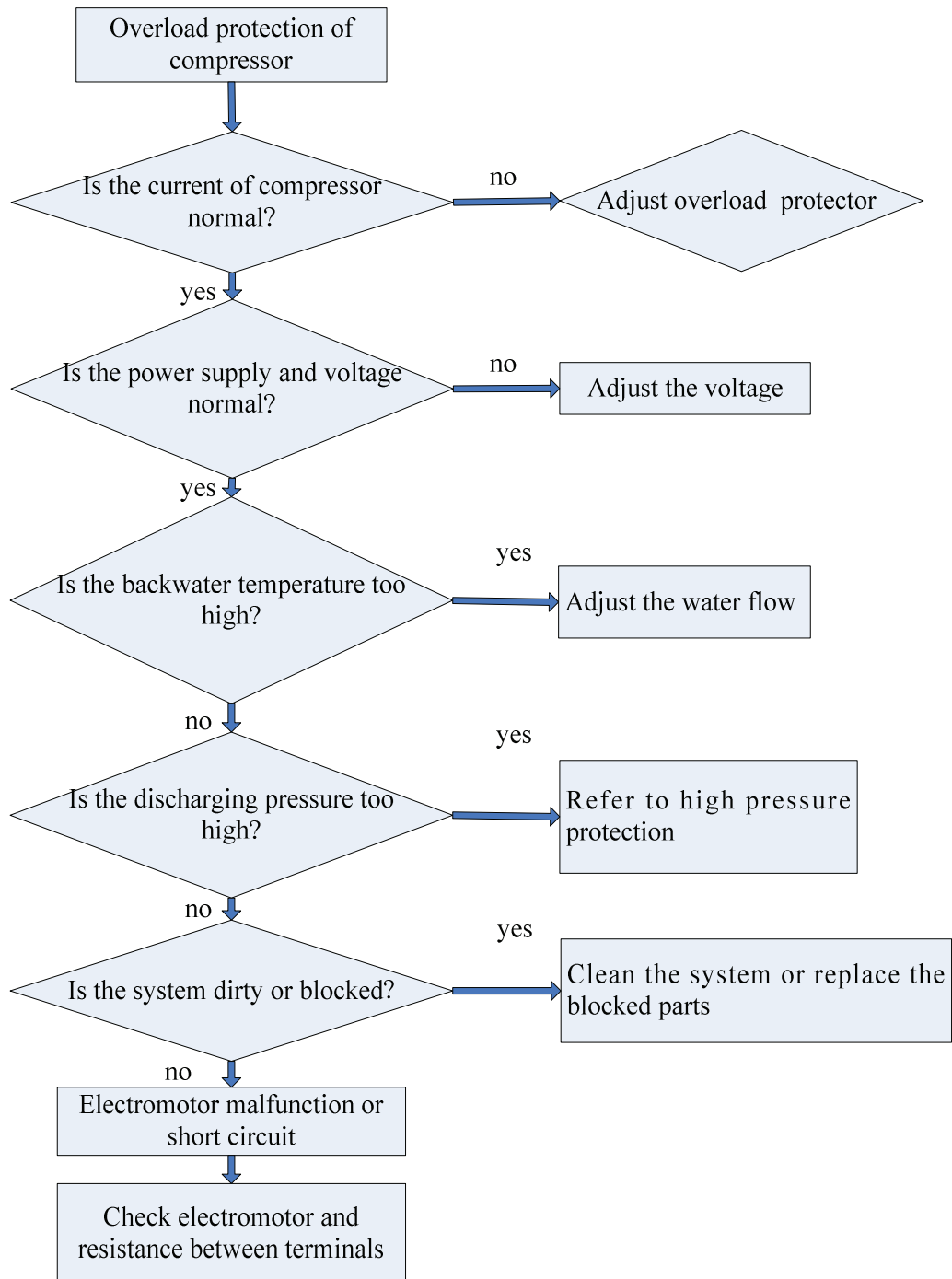
2.1 High Pressure Protection



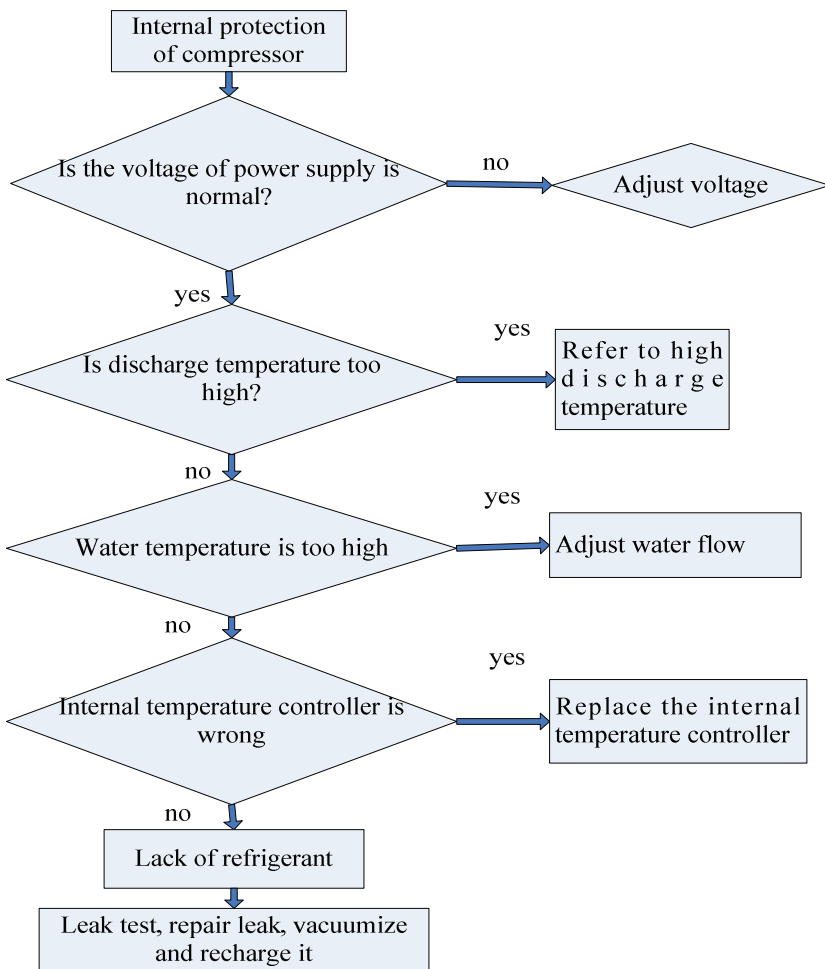
2.2. Low Pressure Protection



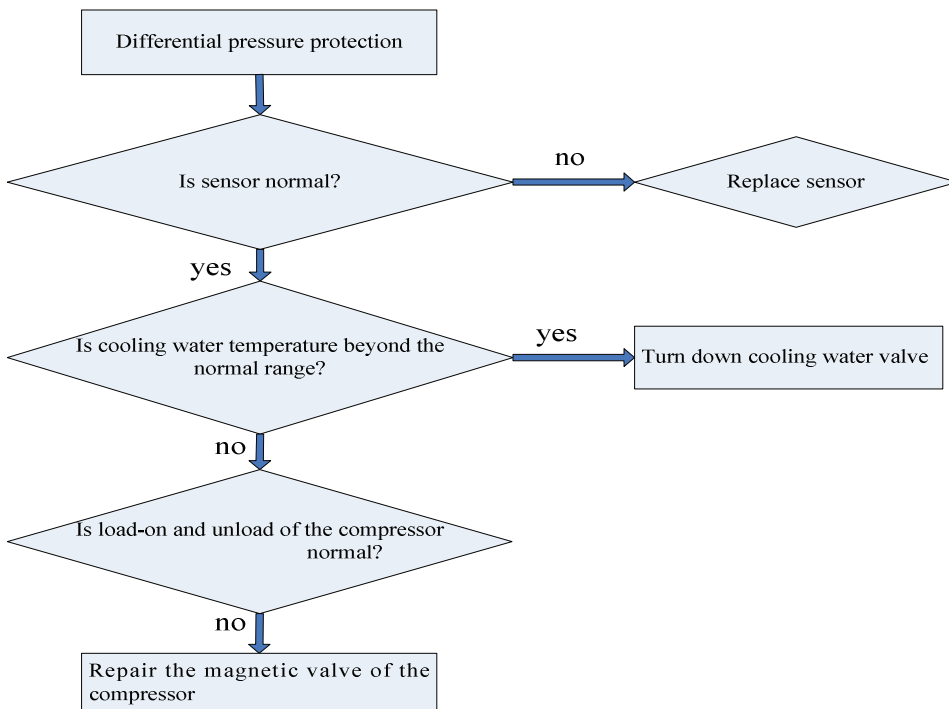
2.3. Overload Protection of Compressor



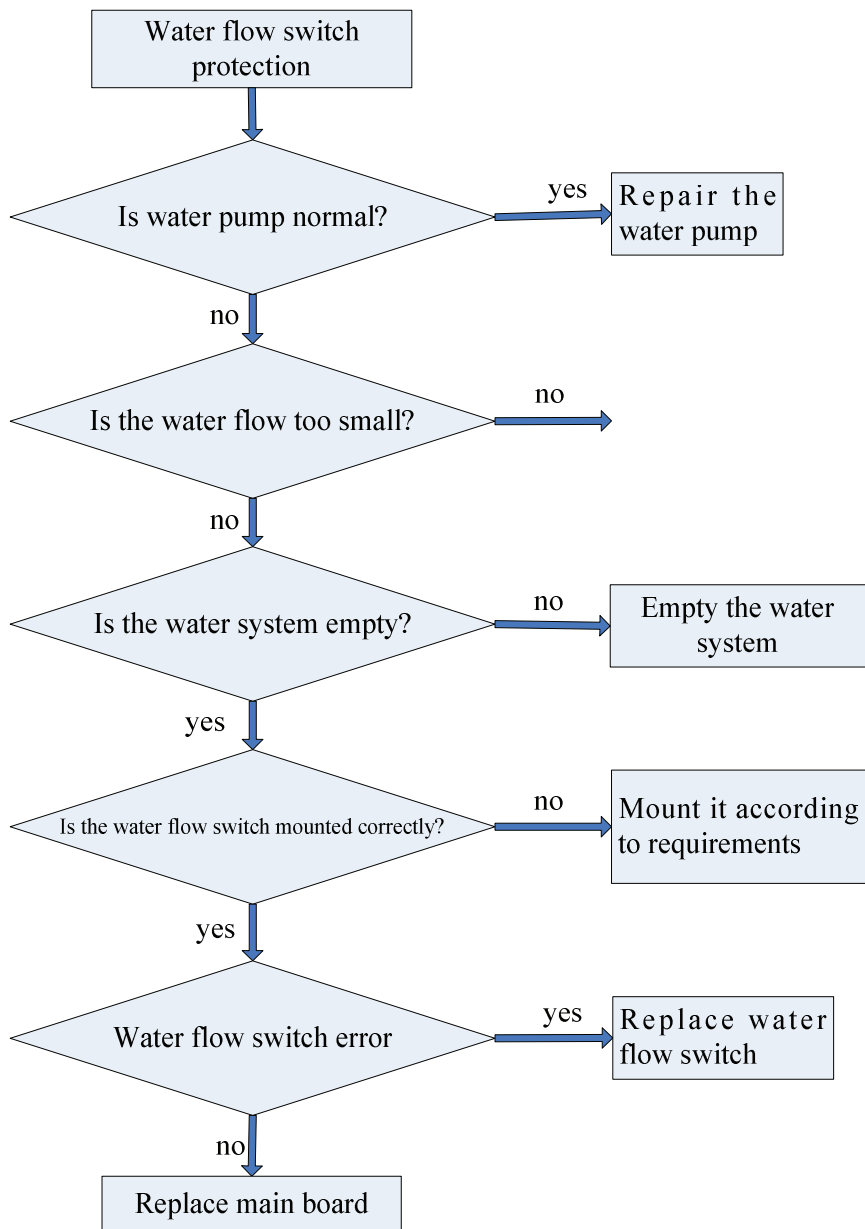
2.4. Internal Protection



2.5. Differential Pressure Protection



2.6. Water Flow Switch Protection



2.7. Oil Level Switch Protection

